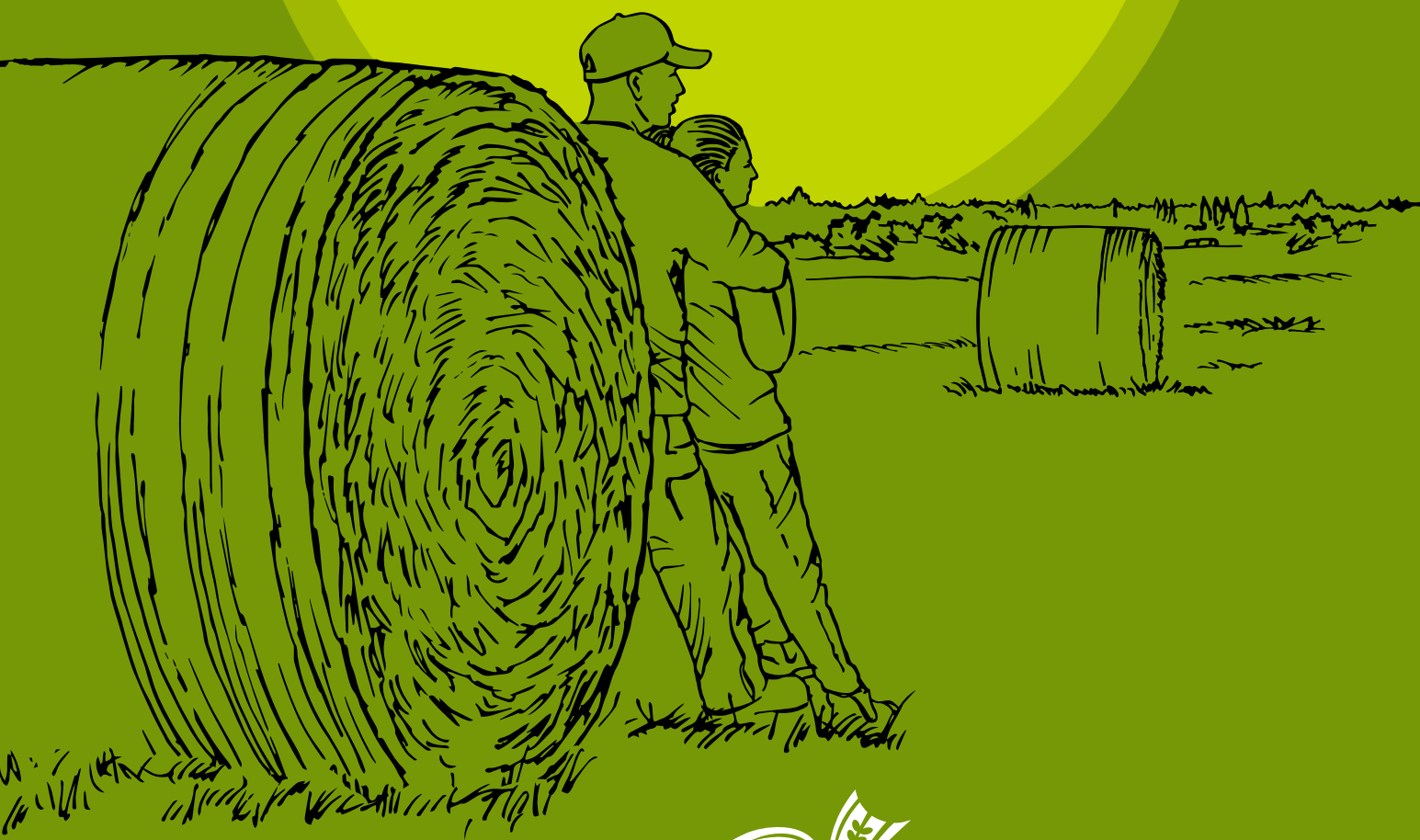


TamaNet Netwrap Catalogue

TOGETHER WE
GROW



At Tama, we've got you covered – from protecting your crops to ensuring reliable and consistent baling – giving you one less thing to worry about.

Leveraging over 70 years of agricultural and manufacturing expertise and experience, Tama is more than just a provider of high-quality crop baling products.

As farmers, we understand your concerns and offer Tama+ our range of world-leading, edge to edge netwrap and twine solutions. When the time comes to focus on baling, we accompany you throughout the process – from selecting the right product, through facilitating non-stop, trouble-free baling, to maximizing performance.

By choosing Tama, you enjoy not only leading products and solutions, but also peace of mind, enabling you to focus on what you do best – being a professional farmer.

“Tama knows what I need, since they're farmers themselves.”

John Brewer,
Brewer Contractors,
Blackburn, UK



TamaNet+ ROYAL[®] 2.5 WRAPS PER BALE!



Breakthrough Technology[®]
BALE LOK
Our latest development enabling
2.5 wraps per bale!

High density cereal crops and heavy-duty baling have always required at least 4-5 wraps, or even more... until now.

Introducing: TamaNet+ Royal[®]. 70 years of innovative farming solutions brought to life with a first of its kind baling experience - Only 2.5* wraps per bale!

* Based on field trials which were carried on high-density crops that are usually baled with 4-5 wraps per bale.

PRODUCT INFO

Name	Roll Length	Roll Width	Roll Diameter	Roll/Pal
Tama Royal [®]	3800 m	123 cm	29 cm	28



36%
SAVED

ULTRA COST EFFECTIVE!

Up to 36% saved on your costs per bale + enjoy as many as 50 more bales compared to the standard 3600 m.

40%
LESS

FASTER THAN EVER!

Up to 40% less downtime - with a record-breaking an incredible 7.5 seconds of wrapping per-bale.

45%
LESS

LESS PLASTIC!

Up to 45% less plastic per bale - That's 1000 m less plastic for every 100 bales!

HEAVY DUTY BALING!

- Tailor-made for high density cereal crops.
- Designed to withstand the highest pressure.
- Crafted to enhance your performance.

Royal[®] COVERAGE!

TamaNet+ Royal[®] carries Tama's ultimate guarantee for reliable and consistent baling with all baler types, under any conditions.



TamaNet+ WE'VE GOT YOU COVERED

**ORIGINAL TAMA[®]
EDGE TO EDGE
NETWRAP**



With TamaNet+ you get the security that you need and the peace of mind you deserve.

Once the baling season begins, you need to be sure that your netwrap stays strong, right from the day you wrap the bale, until the day it is used. Founded and managed by farmers, Tama understands your need for robust netwrap and offers TamaNet+.

RELIABILITY

- . The only Net 'Patented' Original EDGE TO EDGE.
- . Compatible with all round balers.
- . Tried and approved by all leading baler manufacturers.
- . Our products' strength, length and all other measurements are annually checked and approved by DLG.

CONSISTENCY

- . Perfect bales every time.
- . Effective coverage under all weather conditions.
- . Suitable for all crops.

OUR LEADING TECHNOLOGY WORKS FOR YOU



GUARANTEED MINIMUM LENGTH

Every roll contains the guaranteed stated length, not a "plus-or-minus" average.



LIGHTER NETS

Easier to carry and handle.



LONGER ROLLS

More bales per roll, less roll changes and higher efficiency.



ENVIRONMENTALLY OPTIMIZED FORMULA

Each bale is wrapped with less plastic material to reduce the environmental impact.



SUPERIOR GRIP IN ALL CONDITIONS

Ultimate connection between layers and strong tail security.

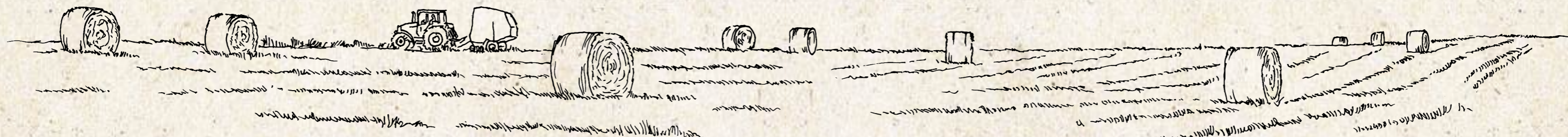


MESH LOCK TECHNOLOGY

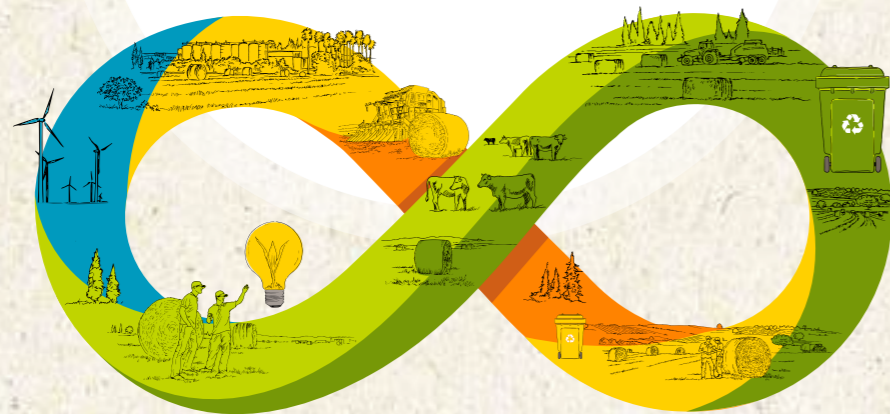
Eliminates the risk of net laddering.

PRODUCT INFO

Name	Roll Length	Roll Width	Roll Diameter	Roll/Pal
TamaNet+	4500 m	123 cm	29 cm	28
TamaNet+	3800 m	123 cm	27.5 cm	28
TamaNet+	2800 m	123 cm	24 cm	36



TOGETHER WE CARE FOR THE ENVIRONMENT



The land is the basis for everything. As farmers ourselves we're fully committed to minimizing environmental impact with every means at our disposal.

We are committed to fulfil our part and reduce plastic waste to a minimum. We understand the valuable role that plastic plays in agricultural sectors, with that in mind, we continue to look for innovative ways to develop our products with less plastic and complete environmental awareness. Tama utilizes innovative production techniques and advanced materials that make our netwrap and twine products lighter and stronger than others on the market.

This means up to 30% less plastic usage per bale.

We recognize the importance of recycling and disposing of plastic properly, in order to ensure sustainable development and we participate in mandatory and voluntary collection programmes in many Western European countries and regions. We maintain an open dialogue with all official committees, groups and organizations that tackle the issue of plastic waste across diverse markets, as well as actively providing them with technical support.

THE PERFECT MATCH

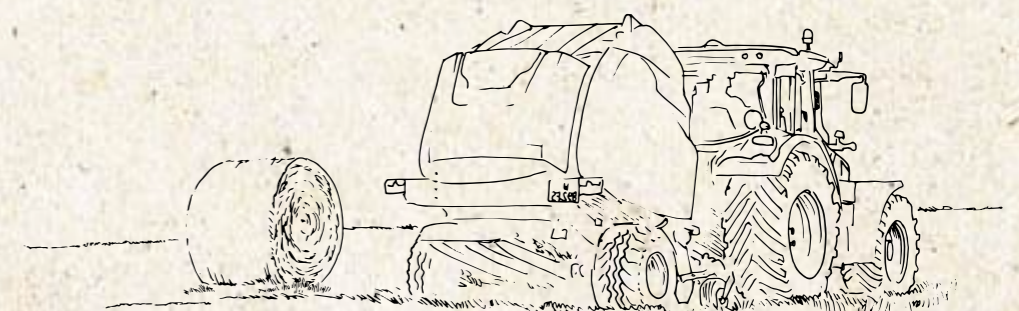


Partnering with Leading Baler Manufacturers:

As farmers, we understand your need for compatibility.

Tama maintains long-term partnerships with the world's leading original equipment manufacturers (OEMs). From machine and wrapping development, through product approval and recognition, to crop baling product distribution, all aspects of the business are covered in our OEM agreements.

In this way, we ensure that our solutions seamlessly integrate with the baler of your choice.



SUPPORTING YOUR SUCCESS



As farmers, we understand your need for assistance.

Every farmer needs support at one time or another to achieve the best results. Since our founding 70 years ago, Tama has accumulated extensive know-how and experience and we're happy to share those assets with you to help improve your baling performance and your business.



Our dedicated, online support service - Tama Assist, is available to farmers throughout the year - anytime, anywhere. So if you need an answer to a technical question about baling, a tip for taking care of your baler, or advice on using one of our solutions, Tama Assist is here to help you.

**Tama Assist - We support you,
your products, and your business.**
www.tama.co.il/tama-assist

TESTIMONIALS FROM THE FIELD



After trying many brands over the past 20 years, I found Tama's netwrap to be the market's most consistent product and the best solution for both baler and farmer. TamaNet+ raises the bar even higher, by delivering unrivalled consistency and reliability."

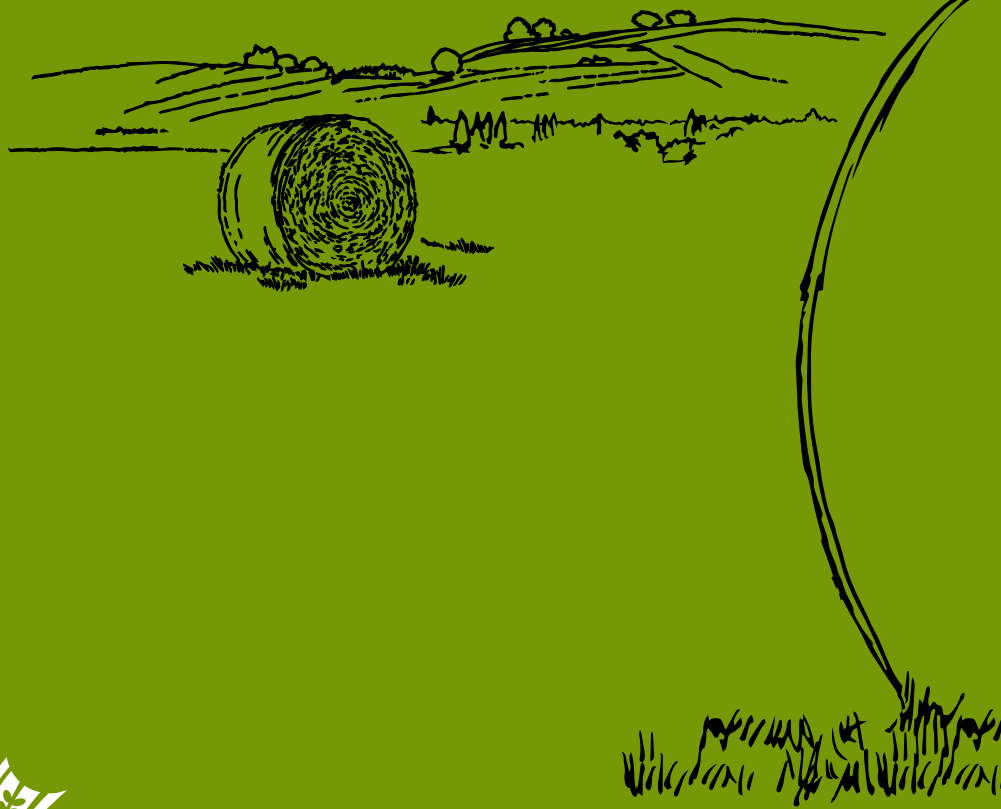
**Michael Dunning, Thomastown,
Ballydangan, Co. Westmeath, Ireland**



TamaTwine+ is not only very strong, but also less thick, which leads to the creation of good knots in the baler. The product works great, and handles more loads than other twines I've tried."

**Jeppe Bang Jensen,
Morten Bang Jensen Farm, Denmark**





Kibbutz Mishmar HaEmek, 1923600 Israel
Tel: +972 4 989 9600 | Fax: +972 4 989 9696
www.tama.co.il | www.facebook.com/Tama.fgs

© 2020, Tama Group. All rights reserved.