

*Parts Manual for*  
**SNAPPER®**

**21" STEEL DECK EUROPEAN  
WALK BEHIND MOWER  
SERIES 20**

<i>Model No.</i>	<i>Description</i>
7800875-00	EP2187520





<b>PAGE</b>	<b>GROUP</b>
4	Handles & Controls
8	Cutting Deck, Blades
10	Wheel & Height-of-Cut Group
12	Drive System - Self Propelled - EURO
16	Transmission Assembly
18	Grass Bag & Discharge Components - EURO
20	Decals



<b>Item</b>	<b>Part No</b>	<b>Qty</b>	<b>Description</b>
0020	7014343YP	2	BUSHING, Flanged, .27 ID, Nylon, Black
0030	704031	1	PIN, 1/4 X 1.5", Clevis, ZC/CL
0040	7023810YP	1	FOAM GRIP, 18.75"
0050	7023813SM	1	CLIP, Wiring Harness
0060	7026219YP	1	CLAMP, 7/8" Double Cable
0070	7028407YP	1	GRIP, International Symbol, 4.6" Black
0080	704004	2	WASHER, .406 ID X 1.0 OD X .063 Thk, Flat Nylon
0090	7028488MA	1	GUIDE, 1/4-20, Rope, CL/ZC
0100	703964	2	WASHER, 7/16" ID, 1" OD, .060 Thk, Flat, ZC/CL
0110	7034604YP	1	CABLE, Clutch Control, 41.25" L
0120	7034872YP	1	CLIP, Zone Control
0130	7105085YP	4	KNOB, 5/16-18, Handle, Fluted 5 Prong, Black
0140	7074003YP	1	BRACKET, Shift, Black Zinc
0150	7074113BMYP	1	LEVER, Shift
0160	15X145MA	1	NUT, 1/4-20, Nylock, GR A, Zinc/Clear
0170	703234	1	SCREW, 1/4-20 X 1.5, Hex Head Cap, GR5, ZC/CL
0180	7090391SM	4	WASHER, 5/16, Internal Lock, Zinc/Clear
0190	703163	2	SCREW, 1/4-20 X 2.0, Hex Head Cap, GR5, Zinc/Clear
0200	704005	1	NUT, 1/4, Push, Zinc/Clear
0210	703462	3	WASHER, 1/4 Internal Tooth Lock, YZ
0220	703127	3	NUT, 1/4-20, G5 Zinc/Clear
0230	703059	4	BOLT, 5/16-18 X 2.00 Conical Head, SN ZC/CL
0240	703589	1	SCREW, 3/8-16 x 2, Hex Head Cap, GR5, Zinc/Clear
0250	703347	1	NUT, 3/8-16, Hex Center-Lock, GR B, Zinc/Clear
0260	7102593YP	1	CABLE, Zone Control, W14, 52.661" L
0270	7102594YP	1	CONTROL, Throttle, W14, 63.12" L
0270-10	7075308YP	1	KNOB, Throttle, Red
0280	7074156AYP	1	HANDLE, Middle
0290	7074411AYP	1	HANDLE, Upper
0300	7074418AYP	1	BAIL, OPC Control (16.6" Wide)
0310	7074473AYP	1	HANDLE, Clutch
0320	690798	1	CLAMP, Casing
0330	704006	1	WASHER, 3/8" ID x 3/4" OD, Belleville, Zinc/Clear
0340	704324	1	SCREW, #10-32 X .615, Hex Head Cap Slotted, Zinc/Clear
0350	7024641YP	4	WIRE TIE, 5.5" L
0360	703351	1	SCREW, #8-32 X 0.50, Machine Fillister Head, Zinc/Clear
0370	703350	1	WASHER, 5/16, Flat SAE, Zinc/Clear
0380	7033985AYP	1	HANDLE, Lower, ADJ, LH
0390	7033986AYP	1	HANDLE, Lower, ADJ, RH
0400	7074133YP	1	ROD, Speed Control (35.5" L, 1/4-28 thread)
0410	7075182YP	1	KNOB, Shift, Red
0420	704030	1	PIN, 5/16 X 1.044, Self-Locking Cotter, Zinc/Clear
0430	703167	1	SCREW, 5/16-18 x 1-1/4 Hex Washer Head Self-Tap
0440	9357MA	2	SCREW, 5/16-18 X .750, Flanged Whiz-Lock, GR5

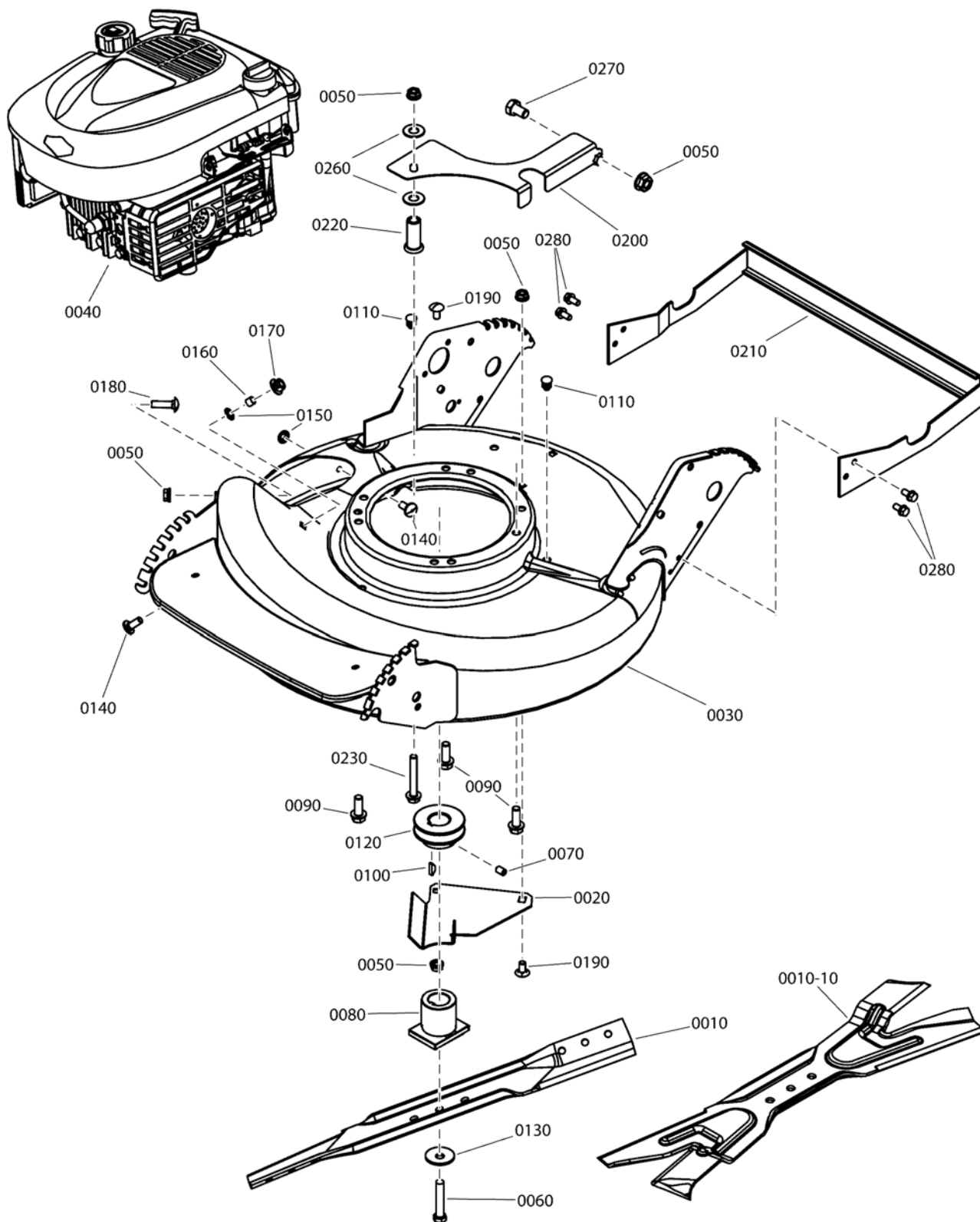
**Footnotes:**



<b>Item</b>	<b>Part No</b>	<b>Qty</b>	<b>Description</b>
0450	703301	1	SCREW, 5/16-24 x 1 Hex Head Cap, GR 5, BZ
0460	7074140YP	1	PANEL, Control, No Electric Switch
0470	703460	1	NUT, #8-32, Hex, Zinc/Clear
0480	703961	4	SCREW, 1/4-20 X .550, T-30 Pan Head Torx, Self-Tapping, Zinc/Clear

Footnotes:

# Cutting Deck, Blades





<b>Item</b>	<b>Part No</b>	<b>Qty</b>	<b>Description</b>
0010	7019795YP	1	BLADE, 21" W/Air Lift Holes
0010-10	7026407AYP	1	BLADE, 21" Ninja Mulching
0020	7074568YP	1	COVER, Belt, Zinc/Clear
0030	7500549DYP	1	KIT, Deck Weldment, 21", Part Sales, HV, SP, ES (red, w/decals)
0040	122S72-0125-H1	1	* ENGINE, B&S 875 SER W/Oil Filter, Mod. 122S72-0125-H1
0050	703409	5	NUT, 5/16-18, Serated Lock Flange, GR5, Zinc/Clear
0060	703999	1	SCREW, 3/8-24 X 2, Hex Head Cap, GR5
0070	704003	1	SCREW, 5/16-18 X .50, Hex Socket Head, Phosp/Oil
0080	7015626YP	1	HUB, Blade Drive, .25MM ID
0090	704000	3	SCREW, 3/8-16 X 1.0, Hex Washer Self-Tap, ZC/CL
0100	7091214YP	1	KEY, HI-PRO, .1875X.656, #605
0110	7046780SM	1	PLUG, Hole, .44" OD, Polyethylene
0120	7105122YP	1	PULLEY, Engine (25mm I. D. x 2-1/8 O.D.)
0130	703963	1	WASHER, 13/32x1-13/32" Dia. Cone
0140	703185	2	BOLT, 5/16-18 x 3/4, Carriage, Short Neck, G5, Zinc/Clear
0150	703297	2	RETAINER, 5/16 X .625, Push Nut, GR 5, Zinc/Clear
0160	7024340SM	1	SPACER, .375 OD X .316 ID X .305 L
0170	704001	1	NUT, 5/16-18 Large Flange Center Lock, ZC/CL
0180	704002	1	BOLT, 5/16-18 X 1.125, Carriage, ZC/CL
0190	703447	2	BOLT, 5/16-18 X .625, Carriage, GR5, Zinc/Clear
0200	7033863AYP	1	COVER, Belt
0210	7041400DYP	1	WELDMENT, Fender
0220	7013320YP	1	BUSHING, .388 x .625 x 1.62 Flanged
0230	704322	1	SCREW, 5/16-18X2-1/4, Hex Head Washer, BK/ZC
0260	703964	2	WASHER, 7/16" ID, 1" OD, .060 Thk, Flat, ZC/CL
0270	704317	1	SCREW, 5/16-18X1/2, G5, Hex Head, CL/ZC
0280	B4300GS	4	SCREW, 1/4-20 X .500, Hex HD, Self-Tap, Zinc/Clear

**Footnotes:**

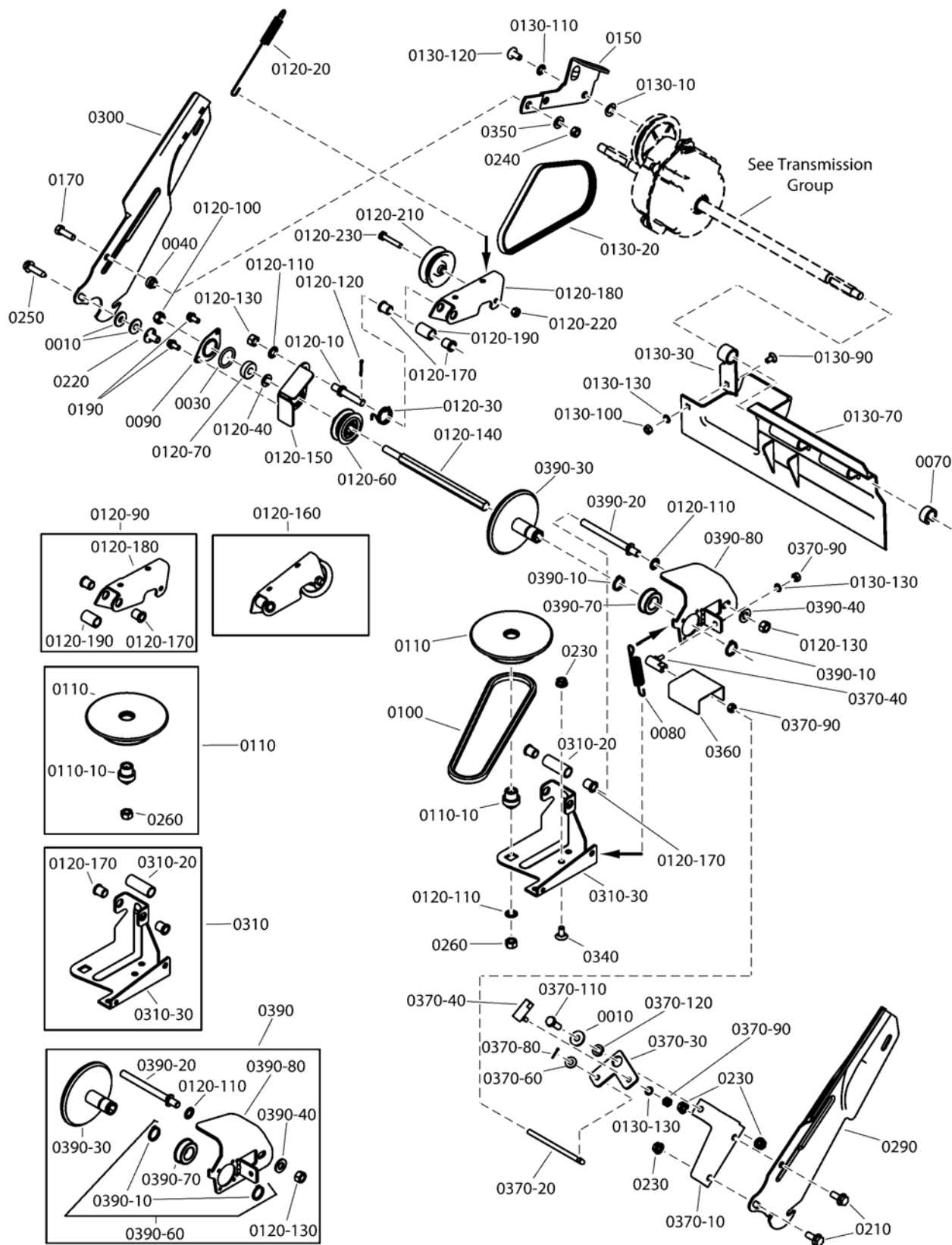
NOTE: \* Purchase engine & engine parts from engine service outlets.



<b>Item</b>	<b>Part No</b>	<b>Qty</b>	<b>Description</b>
0010	703966	2	WASHER, 1 OD x .387 ID, Flat
0020	703964	2	WASHER, 7/16" ID, 1" OD, .060 Thk, Flat, ZC/CL
0030	7600180YP	1	KIT, Front Wheel Arm Assembly, RH
0030-10	703297	4	RETAINER, 5/16 X .625, Push Nut, GR 5, Zinc/Clear
0030-20	7012325YP	2	LATCH, Height
0030-30	703839	2	BOLT, 5/16-18 X .750, Hex Washer Head Shoulder, Zinc/Clear
0030-40	7103793YP	4	GRIP, Height Latch, Black
0030-50	7031017YP	1	WHEEL ARM, Front, Round Hole, RH, Clear
0040	7054246YP	1	ASSEMBLY, Wheel Arm, Long, RR
0040-10	703840	2	BOLT, 5/16-18 X 1.0, Hex Washer Head .435 Dia. Shoulder, ZC/CL
0040-30	7012312YP	2	BEARING, 9/16" ID
0040-50	7032722YP	1	ARM, Wheel, Right Rear, Zinc/Clear
0040-60	7035717YP	2	LATCH, Height Adjusting, (long)
0040-70	703967	6	SCREW, #10-32 x 3/8, Torx Hex Washer Head Self-Tap, ZC/CL
0050	7054247YP	1	ASSEMBLY, Wheel Arm, Left Rear, Long
0050-50	7032723YP	1	ARM, Wheel, Left Rear, Zinc/Clear
0060	703348	2	NUT, 7/16-20, Hex Jam Center Lock, GR B, Zinc/Clear
0070	703409	4	NUT, 5/16-18, Serated Lock Flange, GR5, Zinc/Clear
0080	703347	2	NUT, 3/8-16, Hex Center-Lock, GR B, Zinc/Clear
0090	7100196YP	1	COVER, Front 21 Walk
0100	703835	2	WASHER, Shim, .875 x .531 x .060
0110	7100752YP	1	AXLE, Easy Line (20.44" L, 3/8-16 Threads)
0120	7101350YP	2	HUBCAP, 8" & 9" Spoked Wheel, Cool Gray
0130	7102625YP	2	HUBCAP, 10 Wheel, Spoked - Cool Gray
0140	7600183YP	1	ASSEMBLY, Front Left Wheel Arm (.512 Square Hole)
0140-50	7011393YP	1	WHEEL ARM, L.H. Front (.512 Square Hole) CZ/CL
0150	7500540YP	2	ASSEMBLY, Wheel, 8 x 2 Idle, Snapper Tread, Charcoal Gray
0150-20	7101380YP	4	BALL BEARING, 1-1/8 O.D., Flange
0160	7501078YP	2	ASSEMBLY, Wheel, 10"X2" "DD" Insert Drive, Charcol Gray
0170	703834	2	SCREW, 4.8MM X 1.59MM X 13MM, Torx Round Washer Head, HI-LO, ZC/CL

**Footnotes:**

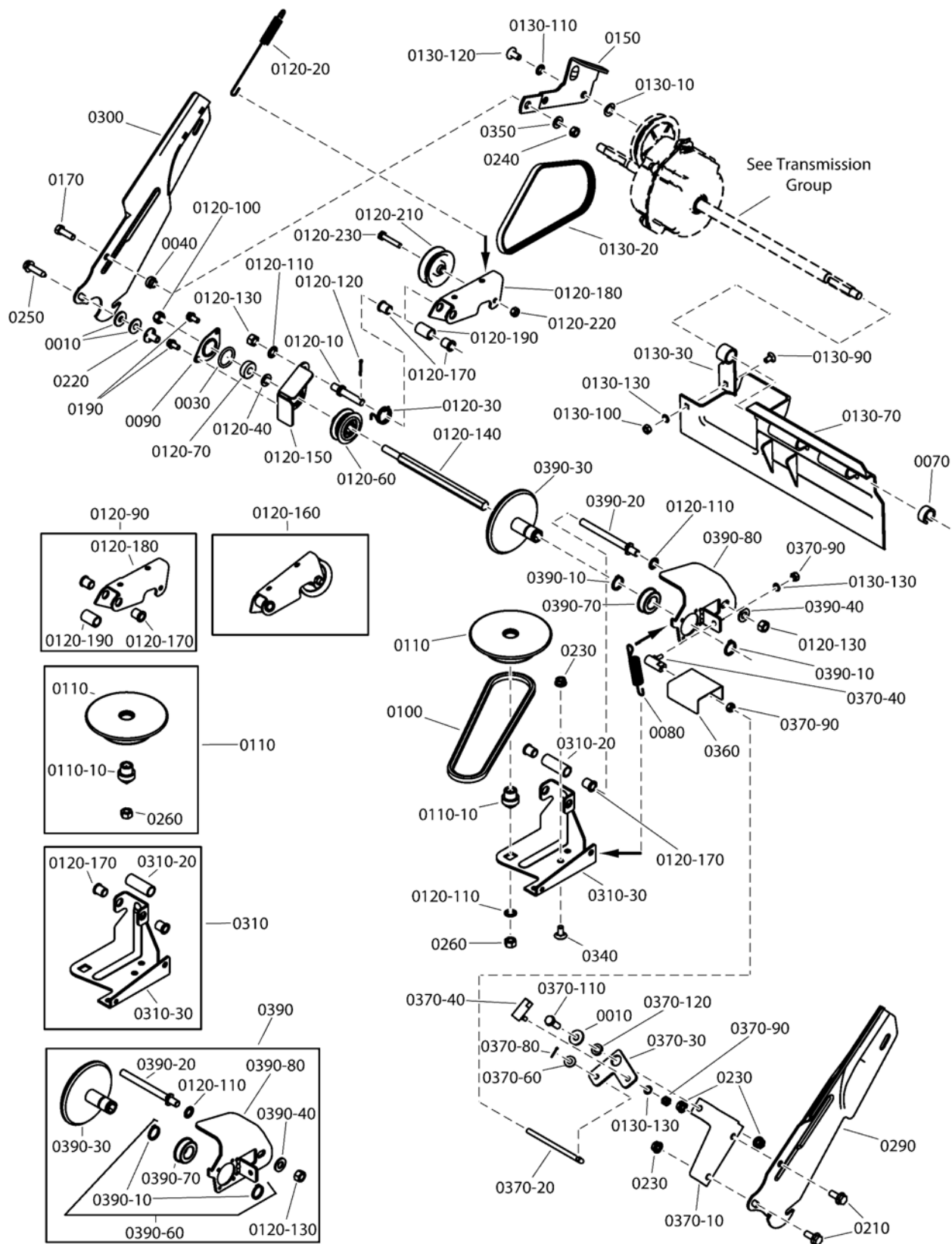
**Drive System - Self Propelled - EURO**



<b>Item</b>	<b>Part No</b>	<b>Qty</b>	<b>Description</b>
0010	703118	3	WASHER, 7/8, Flat, GR5, Zinc/Clear
0030	704008	1	O-RING, 1.0 ID X 1.25 OD X 0.125 Thk
0040	7012114SM	1	BUSHING, Differential
0070	704009	1	RING, Split, .68 x .93 x .44 (Black)
0080	7029025YP	1	SPRING, Extension, .58 x 3.2
0090	7031809YP	1	HOLDER, Bearing (Outer Half), ZC/CL
0100	7046784YP	1	BELT, Engine Drive (Stretch)
0110	7061275YP	1	KIT, Drive Disc, Steel (includes Disc, Bushing & Nut)
0110-10	703971	1	BUSHING, 0.385 ID X 0.925 OD X 1.018 Thk, ZC/CL
0120-10	703836	1	STUD, 3/8-24 X 2.38, Single End, ZC/CL
0120-20	7012122YP	1	SPRING, Clutch, Adjustable Tension
0120-30	7012126YP	1	SPRING, Idler Torsion
0120-40	703946	1	WASHER, .390 ID X .720 OD X .054 Thk, Flat, ZC/CL
0120-60	7019383YP	1	PULLEY, Poly-V, 2" OD, .65" Wide, Steel
0120-70	7028014YP	1	BALL BEARING, Spherical O.D., .38 I.D.
0120-90	7051921YP	1	ASSEMBLY, Clutch Idler
0120-100	703458	1	NUT, 3/8-24 Hex Center Lock, GR B, YZ
0120-110	703930	3	WASHER, 3/8" Internal Tooth Lock, Type A, ZC/CL
0120-120	331613MA	1	PIN, 3/32 X 3/4, GR5, Cotter, Zinc/Clear
0120-130	703895	2	NUT, 3/8-24, Hex, GR 5, Zinc/Clear
0120-140	7072284YP	1	SHAFT, Hex (3/8-24 thread, one end)
0120-150	7031873YP	1	HOLDER, Bearing (Inner Half)
0120-160	7600173YP	1	KIT, Idler Arm, Bushing & Spacer Assembly
0120-170	703973	4	BUSHING, Flanged, .381 x .625 x .62, Metal, CZ/CL
0120-180	7032832YP	1	ARM, Clutch Idler
0120-190	703974	1	SPACER, Idler Arm (.500 ID x .970 Long), ZC/CL
0120-210	7012124YP	1	PULLEY, Flat Idler, .25 ID, 2.25 OD
0120-220	703972	1	NUT, 1/4-28 Hex Top Lock, GR 5, BZ
0120-230	703828	1	SCREW, 1/4-28 x 1-3/8" Hex Head Cap, Grade 5, CZ/CL
0130-10	703940	1	WASHER, 0.445 ID X 0.780 OD X 0.025 Thk, Wave, ZC/CL
0130-20	7012354YP	1	BELT, Poly-V, V21
0130-30	7012616YP	1	SUPPORT, Foot Guard
0130-70	7042918YP	1	GUARD, Foot, P21 EURO, Long
0130-90	703978	1	BOLT, 1/4-20 X 1/2, Carriage, GR5 YZ
0130-100	703127	1	NUT, 1/4-20, G5 Zinc/Clear
0130-110	703587	1	WASHER, 5/16, Internal Lock, Zinc/Clear
0130-120	1753983YP	1	SCREW, 5/16-18 x 5/8 Truss Head Torx
0130-130	703462	3	WASHER, 1/4 Internal Tooth Lock, YZ
0150	7034179BMYP	1	LINK, Differential, Commercial
0170	703301	1	SCREW, 5/16-24 x 1 Hex Head Cap, GR 5, BZ
0190	704130	2	SCREW, 1/4-20 X .500, Hex HD, Self-Tap, Zinc/Clear
0210	9357MA	2	SCREW, 5/16-18 X .750, Flanged Whiz-Lock, GR5
0220	703947	1	NUT, 5/16-18 X .625, Weld, ZC/CL
0230	690272MA	4	NUT, 5/16-18, Serated Lock Flange, GR5, Zinc/Clear

**Footnotes:**

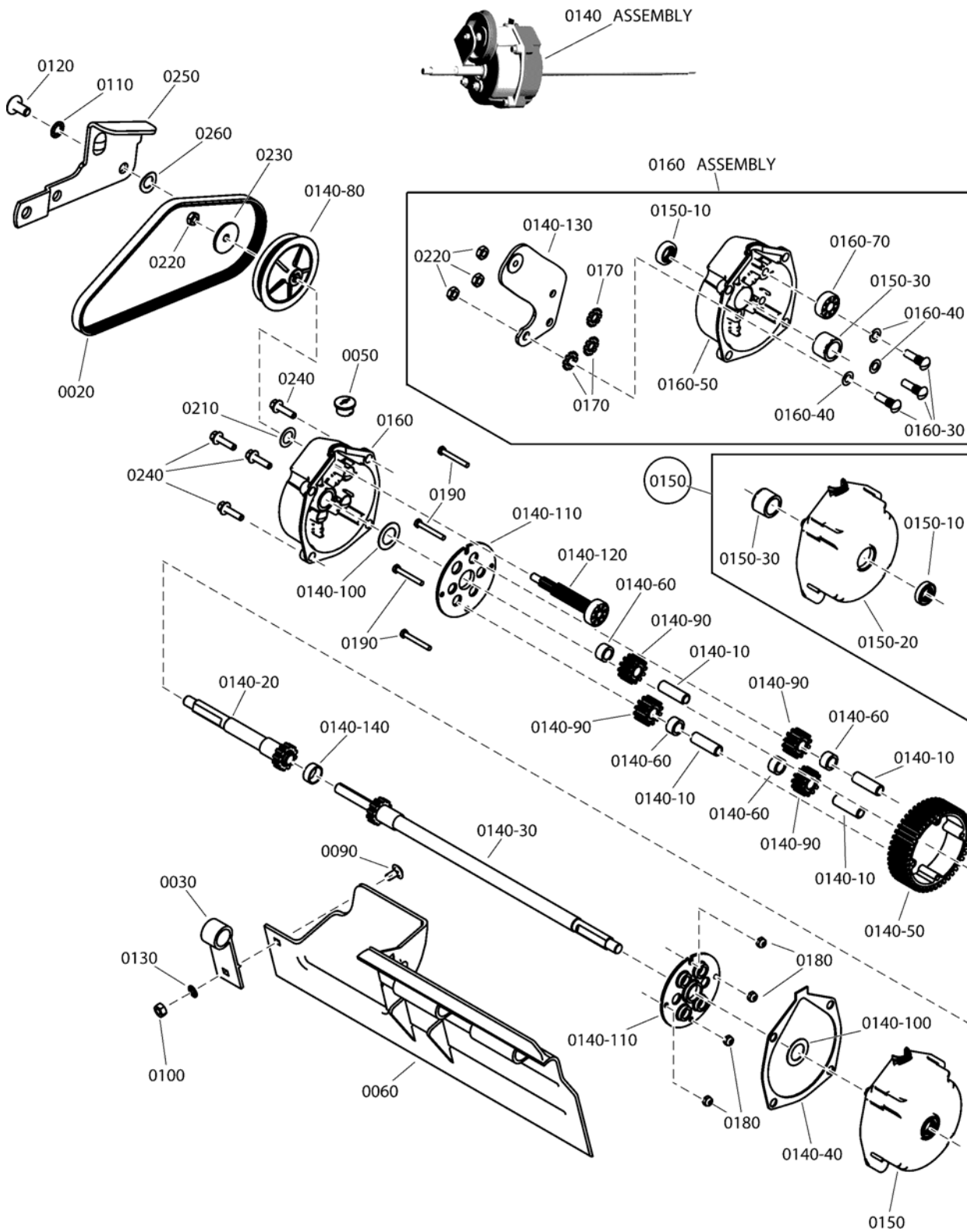
**Drive System - Self Propelled - EURO**



<b>Item</b>	<b>Part No</b>	<b>Qty</b>	<b>Description</b>
0240	703896	1	NUT, 5/16-24, Hex Center Lock, GR B, Zinc/Clear
0250	703167	1	SCREW, 5/16-18 x 1-1/4 Hex Washer Head Self-Tap
0260	703457	1	NUT, 3/8-16, Hex, GR 5, Zinc/Clear
0290	7033985AYP	1	HANDLE, Lower, ADJ, LH
0300	7033986AYP	1	HANDLE, Lower, ADJ, RH
0310	7052987BM	1	ASSEMBLY, Deck Bracket, P21S
0310-20	703941	1	SPACER, .50 ID X .650 OD X 1.750, Thk, ZC/CL
0310-30	7033774YP	1	BRACKET, Deck, P21S
0340	703447	1	BOLT, 5/16-18 X .625, Carriage, GR5, Zinc/Clear
0350	703350	1	WASHER, 5/16, Flat SAE, Zinc/Clear
0360	7032664YP	1	SHIELD, Hex Shaft
0370-10	7073822BMYP	1	BRACKET, Bell Crank
0370-20	7074145YP	1	LINK, Transfer (1/4-28 thread)
0370-30	7073913YP	1	BELL CRANK, Black Zinc
0370-40	7015753YP	2	BALL JOINT, 1/4-28
0370-60	71067MA	1	WASHER, 1/4, Flat, GR5 Zinc/Clear
0370-80	703464	1	PIN, 1/16 X 0.50 Cotter, GR 5 Zinc/Clear
0370-90	703461	3	NUT, 1/4-28 Hex, GR5, Zinc/Clear
0370-110	703408	1	SCREW, 5/16-18 x 7/8 Hex Head Cap, GR 5, Zinc/Clear
0370-120	703970	1	SPACER, .623 OD x .328 ID x .151 L
0390	7600172YP	1	ASSEMBLY, Driven Disc, Cantilever
0390-10	703975	2	RETAINING RING, 3/4" ID, ZC/CL
0390-20	703837	1	STUD, 3/8-24 X 4.5, Plate, ZC/CL
0390-30	7041855YP	1	DRIVEN DISC, Cantilever
0390-40	703590	1	WASHER, 3/8 (.406 X .816 X .65), Flat, Zinc/Clear
0390-60	7501961YP	1	ASSEMBLY, Thrust Plate & Bearing
0390-70	7026693YP	1	BEARING, 3/4" ID
0390-80	7300977BMYP	1	THRUST PLATE, Short, Black

**Footnotes:**

# Transmission Assembly

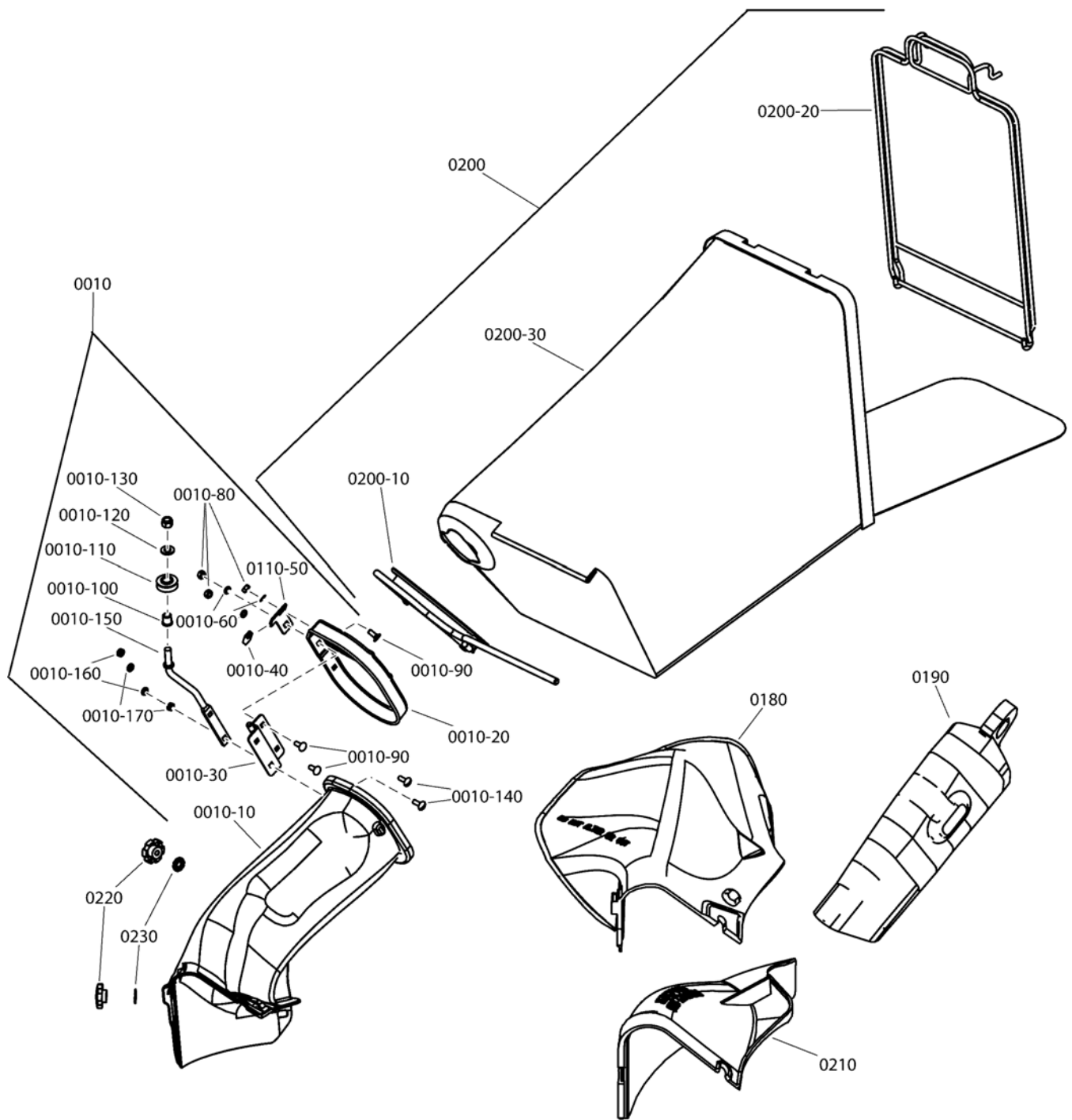




<b>Item</b>	<b>Part No</b>	<b>Qty</b>	<b>Description</b>
0020	7012354YP	1	BELT, Poly-V, V21
0030	7012616YP	1	SUPPORT, Foot Guard
0040	----		GREASE, Darina 00 (Not Shown, Use 4oz. Max)
0050	703931	1	PLUG, Transmission Housing, .702 OD
0060	7042918YP	1	GUARD, Foot, P21 EURO, Long
0090	703978	1	BOLT, 1/4-20 X 1/2, Carriage, GR5 YZ
0100	703127	1	NUT, 1/4-20, G5 Zinc/Clear
0110	7090391SM	1	WASHER, 5/16, Internal Lock, Zinc/Clear
0120	1753983YP	1	SCREW, 5/16-18 x 5/8 Truss Head Torx
0130	703462	1	WASHER, 1/4 Internal Tooth Lock, YZ
0140	7053943YP	1	ASSEMBLY, Transmission, 21P
0140-10	7011110YP	4	SHAFT, Pinion, .471 OD, 1.5" Long
0140-20	7050830YP	1	ASSEMBLY, Short Axle
0140-30	7050831YP	1	ASSEMBLY, Long Axle
0140-40	7011774YP	1	GASKET, V21
0140-50	7012495YP	1	GEAR, 46T, V21
0140-60	703933	4	SPACER, .700 OD x .480 ID x .380 L, ZC/CL
0140-80	7019213YP	1	PULLEY, Poly-V (3.5 O.D.)
0140-90	7021115YP	4	GEAR, Pinion (12 Tooth, .625 Thick)
0140-100	7031965YP	2	WASHER, 1.25 X .765 X .03, Thrust, ZC/CL
0140-110	7031970YP	2	PLATE, Differential Gear, V21
0140-120	7050767YP	1	ASSEMBLY, Input Gear
0140-130	7051903AYP	1	WELDMENT, Differential Bracket
0140-140	703934	1	SPACER, .820 OD X .720 ID X .330 L
0150	7053939YP	1	ASSEMBLY, Left Housing
0150-10	7012314YP	2	SEAL, 5/8" ID
0150-20	7029033YP	1	HOUSING, Left Hand
0150-30	7029035YP	2	BEARING, Tapered, Differential Housing
0160	7051908YP	1	ASSEMBLY, Housing, Right Hand
0160-30	703935	3	BOLT, 5/16-24 x 1-1/8" Rib Neck, GR 5, ZC/BK
0160-40	7024442YP	3	GASKET, 5/8" O.D.
0160-50	7029034YP	1	HOUSING, Right Hand
0160-70	7073963YP	1	BEARING, Ball, 1.125 OD, .440 ID, 3.8 Wide
0170	703936	3	WASHER, .325 ID X .850 OD X .041 Thk, Internal External Lock, Type A, ZC/CL
0180	703937	4	NUT, #10-32, Nyloc, GR A, ZC/CL
0190	703938	4	SCREW, #10-32 x 1-1/2 Hex Head Cap GR5, ZC/CL
0210	703349	1	WASHER, .453 X .75 X .073, Flat, ZC/CL
0220	703459	4	NUT, 5/16-24, Hex Crown Lock, GR C, Zinc/Clear
0230	703939	1	WASHER, .32 ID x 1.40 OD x .10 Thk, Bellville, ZC/CL
0240	703833	4	SCREW, 1/4-20 x 1 Hex Washer Self-Tap, ZC/CL
0250	7034179BMYP	1	LINK, Differential, Commercial
0260	703940	1	WASHER, 0.445 ID X 0.780 OD X 0.025 Thk, Wave, ZC/CL

**Footnotes:**

**Grass Bag & Discharge Components - EURO**



## Grass Bag & Discharge Components - EURO

Item	Part No	Qty	Description
0010	7600182YP	1	KIT, Bag Adapter / Cover Assembly, 21"
0010-10	7016107YP	1	ADAPTER, Grass Bag, EURO 21
0010-20	7019287YP	1	COVER, Bag Adapter
0010-30	7023000YP	1	HINGE, Chute Cover
0010-40	7023042YP	1	TRIM, Moulding
0010-50	7032661YP	1	STOP, Cover
0010-60	703462	3	WASHER, 1/4 Internal Tooth Lock, YZ
0010-80	703127	3	NUT, 1/4-20, G5 Zinc/Clear
0010-90	703865	3	BOLT, 1/4-20 X .625, Carriage, ZC/CL
0010-100	703973	1	BUSHING, Flanged, .381 x .625 x .62, Metal, CZ/CL
0010-110	7024228SM	1	PULLEY, Nylon, .75 ID, 1.3 OD
0010-120	703590	1	WASHER, 3/8 (.406 X .816 X .65), Flat, Zinc/Clear
0010-130	703117	1	NUT, 3/8-16, Nylock, GR5, Zinc/Clear
0010-140	703576	2	BOLT, 1/4-20 X .75, Carriage, GR5, Zinc/Clear
0010-150	7100582YP	1	ROD, Rope Pulley (3/8-16 thread)
0010-160	704321	2	NUT, 1/4-20, GR5, Hex Jam, BZ
0010-170	704133	2	WASHER, 1/4, Lock, Split Spring, Zinc/Clear
0180	7042965YP	1	CHUTE, 21" Side Discharge
0190	7016814YP	1	PLUG, Chute Adapter Mulching
0200	7500153YP	1	ASSEMBLY, Grass Bag, Door, No Graphics, 12.5" W, 26.5" L
0200-10	7042489AYP	1	WELDMENT, Bag Connector
0200-20	7051906AYP	1	ASSEMBLY, Bag Wire, 12.25" Wide
0200-30	7100433YP	1	GRASS BAG, Door, No Graphics, 12.5" W, 26.5" L
0210	7029149YP	1	COVER, Mulching, 21" Deck
0220	7105085YP	2	KNOB, 5/16-18, Handle, Fluted 5 Prong, Black
0230	7090391SM	2	WASHER, 5/16, Internal Lock, Zinc/Clear

### Footnotes:



---

<b>Item</b>	<b>Part No</b>	<b>Qty</b>	<b>Description</b>
0010	7104853YP	1	DECAL, Front Cover, High Vac
0020	7104148YP	1	DECAL, Logo, Snapper, 7.88"
0030	7029782MA	1	DECAL, OPC Bail, International Symbols
0040	7075471YP	1	DECAL, Speed Shift
0050	7075532YP	1	DECAL, Throttle Control, B&S
0060	7101084YP	1	DECAL, Warning, Euro, Multi-Panel

Footnotes:



# Hardware Identification & Torque Specifications

Torque Specification Chart								
FOR STANDARD METRIC MACHINE HARDWARE (Tolerance ± 20%)								
Property Class	5.6		8.8		10.9		12.9	
	Class 5.6		Class 8.8		Class 10.9		Class 12.9	
Size Of Hardware	in/lbs		in/lbs		in/lbs		in/lbs	
	ft/lbs	Nm.	ft/lbs	Nm.	ft/lbs	Nm.	ft/lbs	Nm.
M3	5.88	.56	13.44	1.28	19.2	1.80	22.92	2.15
M4	13.44	1.28	30.72	2.90	43.44	4.10	52.56	4.95
M5	26.4	2.50	60.96	5.75	5.97	8.10	7.15	9.7
M6	44.64	4.3	7.3	9.9	10.3	14	12.1	16.5
M7	5.2	7.1	12.1	16.5	16.9	23	19.9	27
M8	7.7	10.5	17.7	24	25	34	29	40
M10	15	21	35	48	50	67	59	81
M12	26	36	61	83	86.2	117	103	140
M14	42	58	101	132	136	185	162	220
M16	64	88	147	200	210	285	250	340
M18	89	121	202	275	287	390	346	470
M20	126	171	290	390	405	550	486	660
M22	169	230	390	530	559	745	656	890
M24	217	295	497	375	708	960	840	1140
M27	320	435	733	995	1032	1400	1239	1680
M30	435	590	995	1350	1401	1900	1681	2280
M33	590	800	1349	1830	1902	2580	2278	3090
M36	759	1030	1740	2360	2441	3310	2935	3980
M39	988	1340	2249	3050	3163	4290	3798	5150

Torque Specification Chart						
FOR STANDARD MACHINE HARDWARE (Tolerance ± 20%)						
Hardware Grade	No Marks		SAE Grade 5		SAE Grade 8	
	SAE Grade 2		SAE Grade 5		SAE Grade 8	
Size Of Hardware	in/lbs		in/lbs		in/lbs	
	ft/lbs	Nm.	ft/lbs	Nm.	ft/lbs	Nm.
8-32	19	2.1	30	3.4	41	4.6
8-36	20	2.3	31	3.5	43	4.9
10-24	27	3.1	43	4.9	60	6.8
10-32	31	3.5	49	5.5	68	7.7
1/4-20	66	7.6	8	10.9	12	16.3
1/4-28	76	8.6	10	13.6	14	19.0
5/16-18	11	15.0	17	23.1	25	34.0
5/16-24	12	16.3	19	25.8	29	34.0
3/8-16	20	27.2	30	40.8	45	61.2
3/8-24	23	31.3	35	47.6	50	68.0
7/16-14	30	40.8	50	68.0	70	95.2
7/16-20	35	47.6	55	74.8	80	108.8
1/2-13	50	68.0	75	102.0	110	149.6
1/2-20	55	74.8	90	122.4	120	163.2
9/16-12	65	88.4	110	149.6	150	204.0
9/16-18	75	102.0	120	163.2	170	231.2
5/8-11	90	122.4	150	204.0	220	299.2
5/8-18	100	136	180	244.8	240	326.4
3/4-10	160	217.6	260	353.6	386	525.0
3/4-16	180	244.8	300	408.0	420	571.2
7/8-9	140	190.4	400	544.0	600	816.0
7/8-14	155	210.8	440	598.4	660	897.6
1-8	220	299.2	580	788.8	900	1,244.0
1-12	240	326.4	640	870.4	1,000	1,360.0

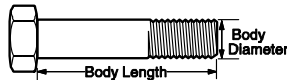
The guides and ruler furnished below are designed to help you select the appropriate hardware.



Nut, M8

Thread Diameter (mm)  
Inside Diameter (in)    Threads per inch

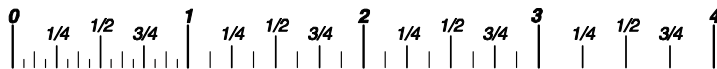
Nut, 1/2-16



Screw, M8- 1.25 x 25

Thread Diameter (mm)    Distance between threads (mm)    Body Length (mm)  
Body Diameter    Threads per inch    Body Length (in)

Screw, 1/2- 16 x 2



## Standard Hardware Sizing

When a washer or nut is identified as 1/2" (M8), this is the *Nominal size*, meaning the *inside diameter* is 1/2 inch (8mm metric thread diameter); if a second number is present it represents the *threads per inch* (distance between threads).

When bolt or capscrew is identified as 1/2 - 16 x 2" (M8 - 1.25 x 50), this means the *Nominal size*, or body diameter is 1/2 inch (8mm metric thread diameter), the second number, 16, represents the *threads per inch*, (1.25 thread diameter). The final number is the body length of the bolt or screw, 2 inches (50mm).

## NOTES

- These torque values are to be used for all hardware excluding: locknuts, self-tapping screws, thread forming screws, sheet metal screws and socket head setscrews.
- Recommended seating torque values for locknuts:
  - for prevailing torque locknuts - use 65% of grade 5 torques.
  - for flange whizlock nuts and screws - use 135% of grade 5 torques.
- Unless otherwise noted on assembly drawings, all torque values must meet this specification.

## Common Hardware Types

Hex Head Capscrew



Washer



Carriage Bolt



Lockwasher



Hex Nut



## Wrench & Fastener Size Guide

1/4" Bolt or Nut Wrench—7/16"	5/16" Bolt or Nut Wrench—1/2"	3/8" Bolt or Nut Wrench—9/16"	7/16" Bolt or Nut Wrench (Bolt)—5/8" Wrench (Nut)—11/16"	1/2" Bolt or Nut Wrench—3/4"
M6 Bolt or Nut Wrench—10mm	M8 Bolt or Nut Wrench—13mm	M10 Bolt or Nut Wrench—17mm	M12 Bolt or Nut Wrench—19mm	M14 Bolt or Nut Wrench—22mm

*Parts Manual for*

**SNAPPER®**

**21" STEEL DECK EUROPEAN  
WALK BEHIND MOWER  
SERIES 20**

IT IS THE POLICY OF BRIGGS & STRATTON CORP TO IMPROVE ITS  
PRODUCTS WHENEVER IT IS POSSIBLE AND PRACTICAL TO DO SO.  
WE RESERVE THE RIGHT TO MAKE CHANGES OR ADD  
IMPROVEMENTS AT ANY TIME WITHOUT INCURRING ANY  
OBLIGATION TO MAKE SUCH CHANGES ON PRODUCTS

**Briggs & Stratton Yard Power Products Group**

535 Macon Road  
McDonough, GA, 30253 U.S.A.  
800-935-2967

[www.snapper.com](http://www.snapper.com)

Copyright © 2014 Briggs & Stratton Corporation  
Milwaukee, WI USA. All Rights Reserved

**Manual No. 7106292  
Revision: A 7/29/2014**